



# MONTHLY MEMBERSHIP PROGRESS REPORT

District 35 I

Results as of: 06/30/2019

GMT: OPEN

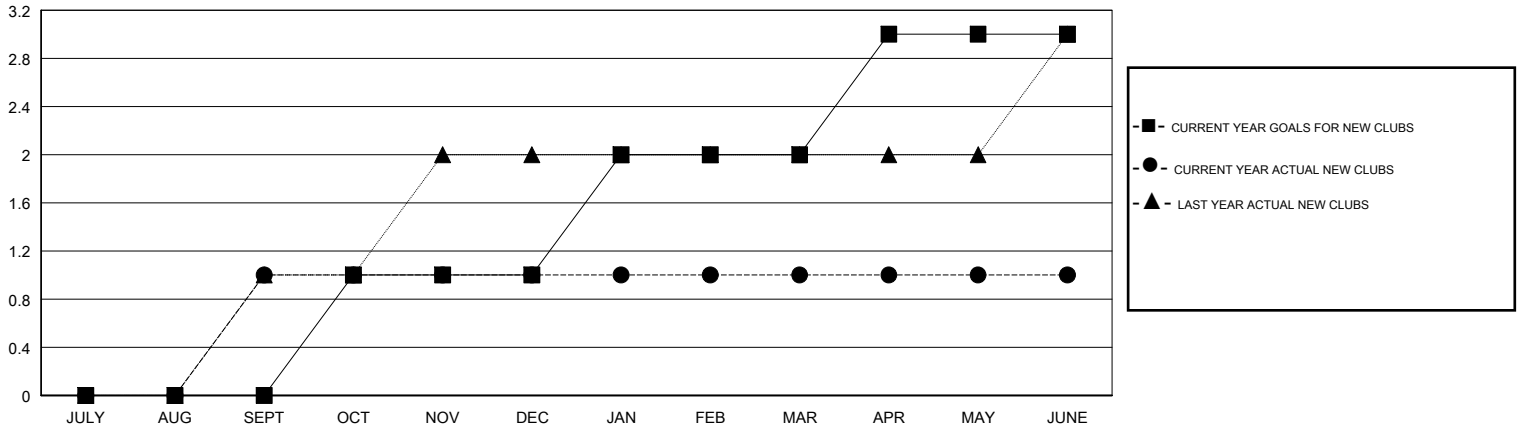
LOCATION FLORIDA

GMT CA

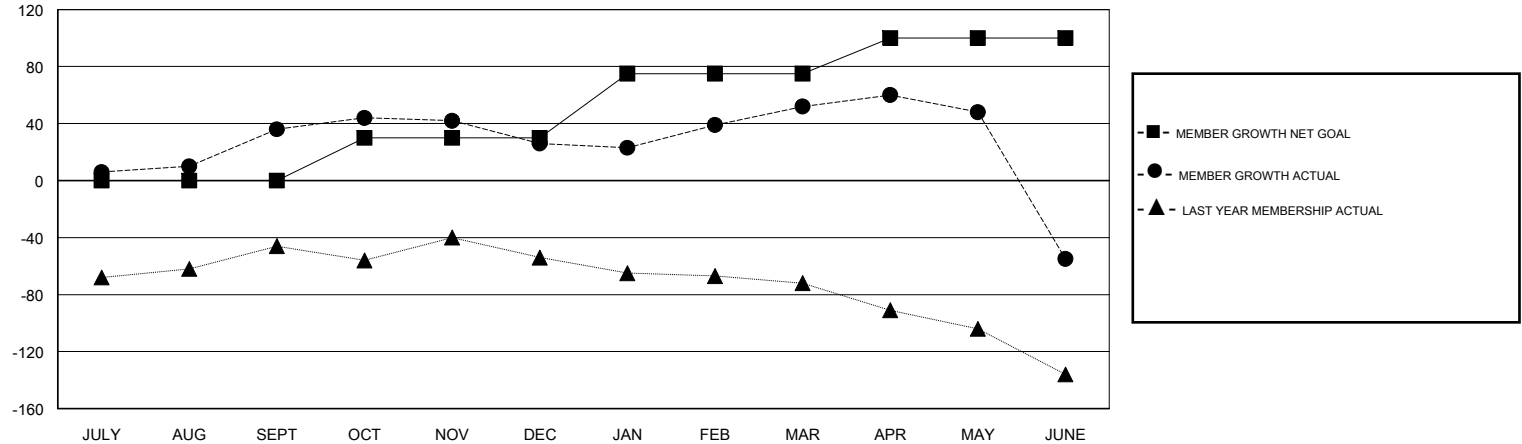
Clubs			
RESULTS FOR 2018-2019			
QUARTER	NEW CLUB GOAL	NEW CLUBS	DROPPED CLUBS
JULY/AUG/SEPT	0	1	0
OCT/NOV/DEC	1	0	2
JAN/FEB/MAR	1	0	0
APR/MAY/JUNE	1	0	2

Members			
RESULTS FOR 2018-2019			
QUARTER	MEMBER GROWTH NET GOAL	MEMBER GROWTH ACTUAL	DROPPED MEMBERS ACTUAL (including transfers)
JULY/AUG/SEPT	0	71	22
OCT/NOV/DEC	30	82	76
JAN/FEB/MAR	45	66	33
APR/MAY/JUNE	25	56	156

GOALS AND ACTUAL NEW CLUBS CUMULATIVE



GOALS AND ACTUAL MEMBERS CUMULATIVE



DROPPED CLUBS: 4	40 CLUBS OF 51 ADDED 1 OR MORE NEW MEMBERS	<u>GENDER DISTRIBUTION</u> MALE 644 (51.31%) FEMALE 611 (48.69%) Women Percentage Fiscal Year Goal: 46%
<u>DROPPED MEMBERS</u> DECEASED 15 CLUB CANCELLED 9 OTHER 263 TOTAL 287	<a href="#">CLICK HERE FOR CUMULATIVE MEMBERSHIP DATA</a>	TOTAL FAMILY UNIT MEMBERS 337 FAMILY MEMBERS PAYING HALF DUES 172